

GLP72

— 167.63
— 162.06

— 131.99
— 121.83
— 115.58

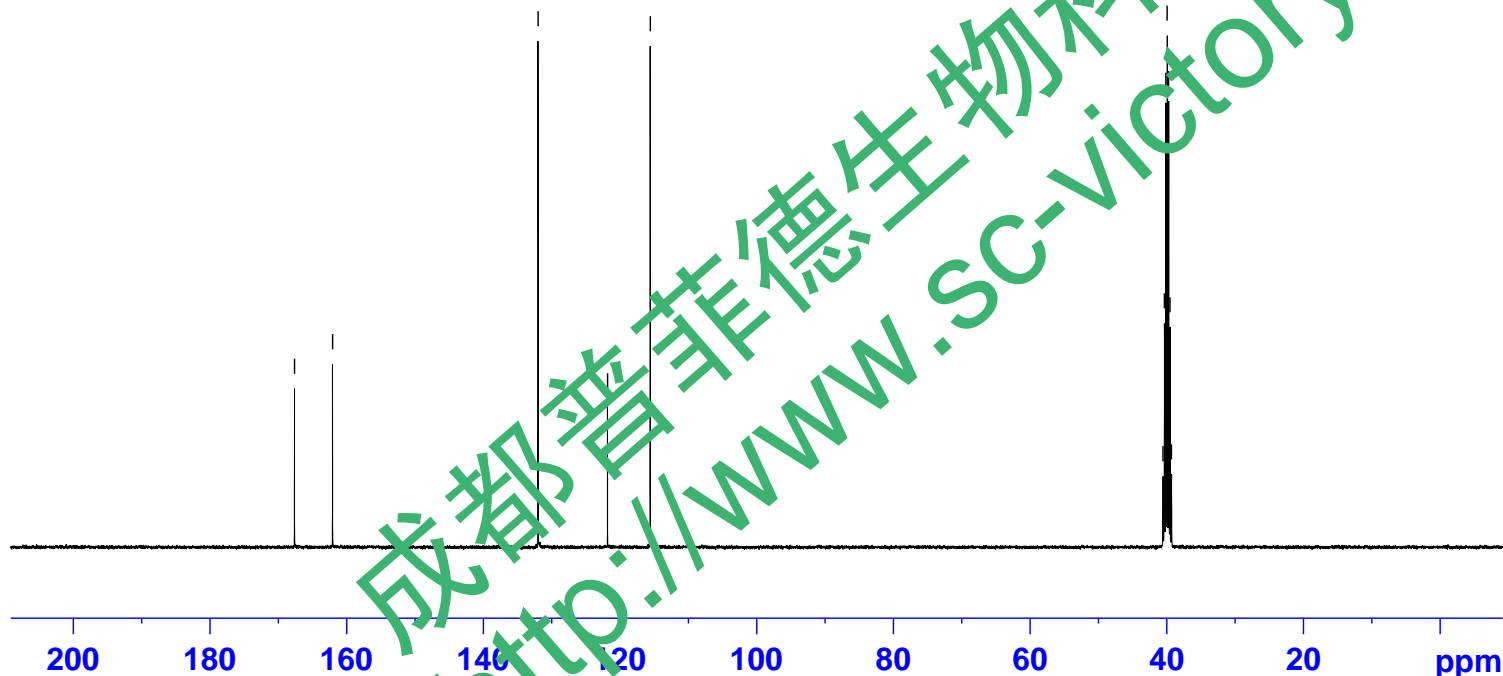
40.57
40.36
40.15
39.94
39.73
39.52
39.32



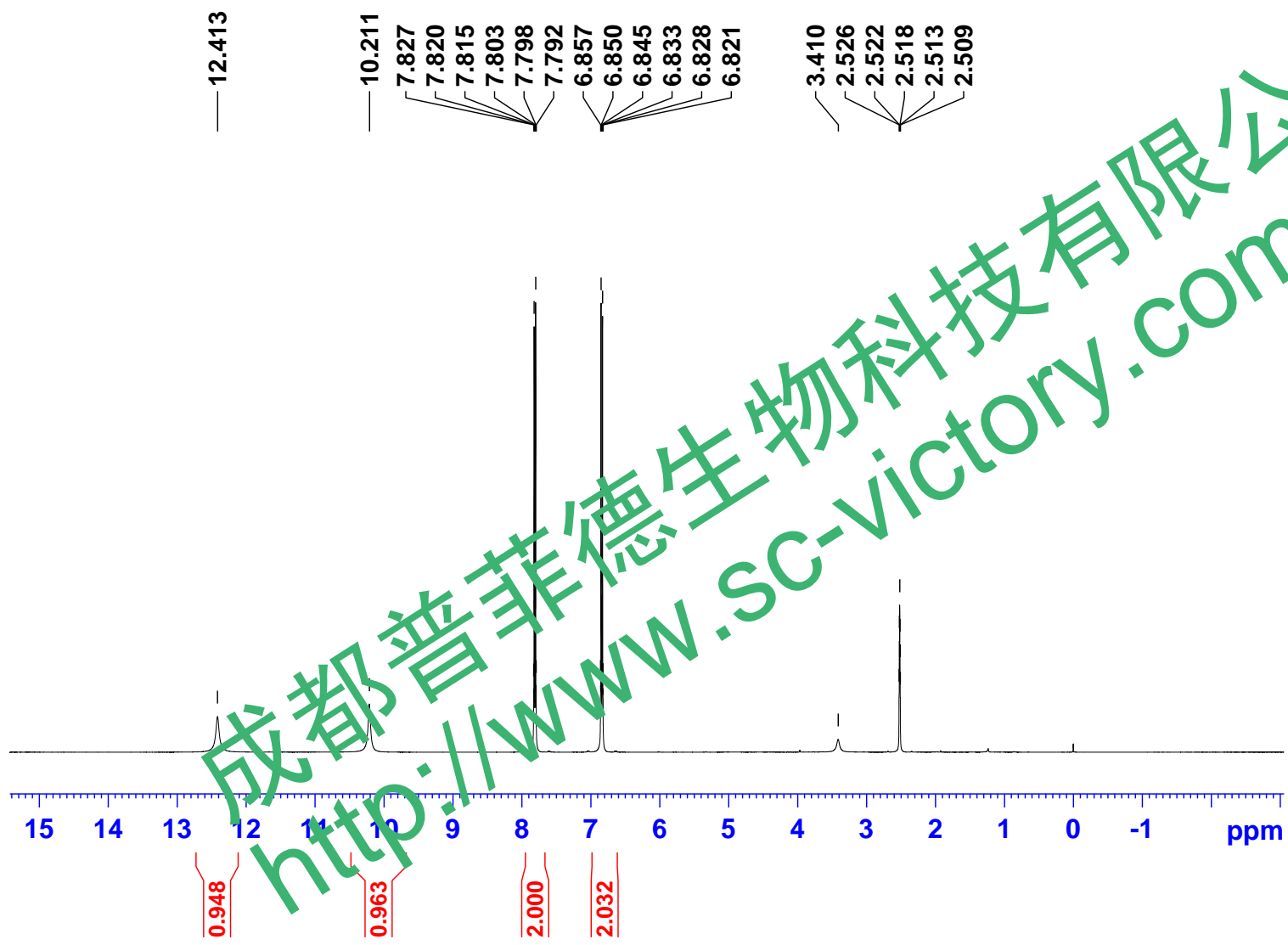
Current Data Parameters
NAME GLP72
EXPNO 11
PROCNO 1

F2 - Acquisition Parameters
Date_ 20210303
Time 2.22 h
INSTRUM spect
PROBHD Z116098_0564 (
PULPROG zgpg30
TD 65536
SOLVENT DMSO
NS 600
DS 4
SWH 24038.461 Hz
FIDRES 0.733596 Hz
AQ 1.3631488 sec
RG 198.68
DW 20.800 usec
DE 6.50 usec
TE 300.0 K
D1 2.00000000 sec
D11 0.03000000 sec
TD0 1
SFO1 100.6228298 MHz
NUC1 13C
P1 10.53 usec
PLW1 69.16899872 W
SFO2 400.1316005 MHz
NUC2 1H
CPDPRG[2] waltz16
PCPD2 90.00 usec
PLW2 14.56099987 W
PLW12 0.19257000 W
PLW13 0.09686100 W

F2 - Processing parameters
SI 32768
SF 100.6127685 MHz
WDW EM
SSB 0
LB 1.00 Hz
GB 0
PC 1.40



成都普菲德生物科技有限公司
http://www.sc-victory.com



Current Data Parameters
NAME GLP72
EXPNO 10
PROCNO 1

F2 - Acquisition Parameters
Date_ 20210303
Time 1.46 h
INSTRUM spect
PROBHD Z116098_0564 (
PULPROG zg30
TD 65536
SOLVENT DMSO
NS 16
DS 2
SWH 8012.820 Hz
FIDRES 0.244532 Hz
AQ 4.0894465 sec
RG 62.81
DW 62.400 usec
DE 6.50 usec
TE 300.0 K
D1 1.00000000 sec
TD0 1
SFO1 400.1324708 MHz
NUC1 1H
P1 10.35 usec
PLW1 14.56099987 W

F2 - Processing parameters
SI 65536
SF 400.1299954 MHz
WDW EM
SSB 0
LB 0.30 Hz
GB 0
PC 1.00